



**2 Bed House - Terraced**  
**59 Nesfield Close, Alvaston, Derby, DE24 0QT**  
**£850 Per Calendar Month**  
**Approx 550.00 sq ft**



[attain-properties.co.uk](http://attain-properties.co.uk)

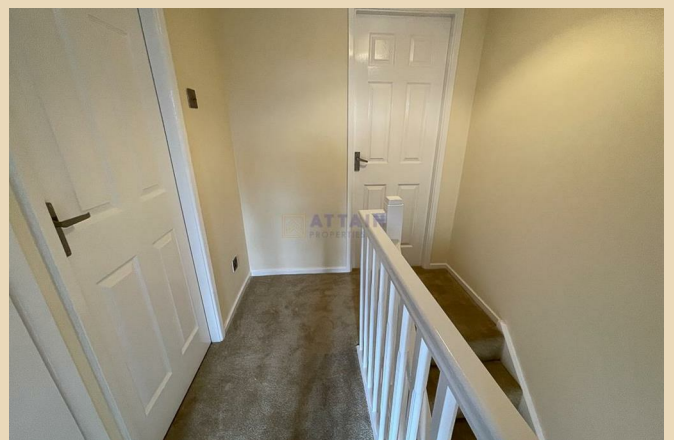
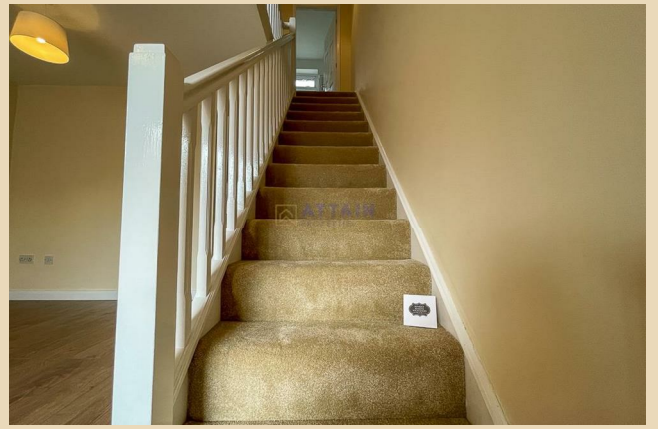
- Front & Rear Gardens
- Available Now
- Deposit Replacement Option Available
- Luxury Carpets / Flooring Through-out
- Allocated Parking Space & Free Street Parking
- Highly Desirable Area In Alvaston

Instantly feel at home when walking into this beautifully presented property.  
Ready to move in after successful references don't hesitate to arrange a viewing today!

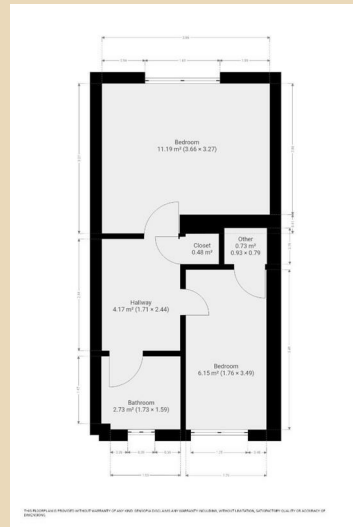
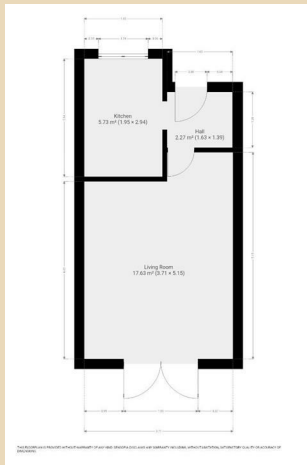
Be sure to check out the 360 virtual tour on the listing and ask us about our deposit replacement option.

This property benefits from a well-located modern combi boiler and has an allocated parking space to the rear with plenty of street parking in front.

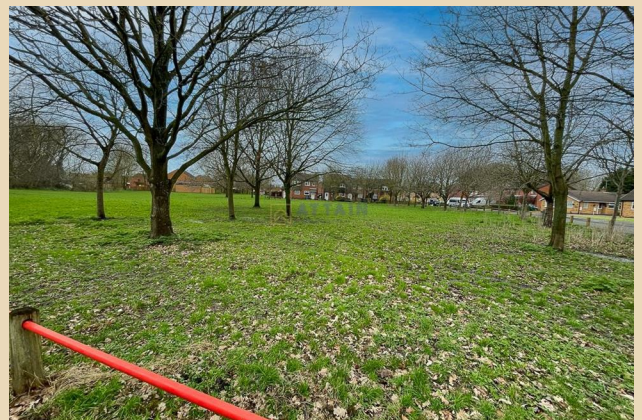
A fridge-freezer will be provided.



These particulars do not constitute an offer or a contract neither do they form part of an offer or contract. The vendor does not make or give Attain Properties Limited nor any person employed has any authority to make or give any representation or warranty, written or oral, in relation to this property. Whilst we endeavour to make our sales details accurate and reliable, if there is any point which is of particular importance to you, please contact the office and we will be pleased to check the information for you, particularly if contemplating travelling some distance to view the property. None of the services or appliances to the property have been tested and any prospective purchasers should satisfy themselves as to their adequacy prior to committing themselves to purchase.



Energy Efficiency Rating		
	Current	Potential
<i>Very energy efficient - lower running costs</i>		
(92 plus) <b>A</b>		<b>87</b>
(81-91) <b>B</b>		
(69-80) <b>C</b>	<b>67</b>	
(55-68) <b>D</b>		
(39-54) <b>E</b>		
(21-38) <b>F</b>		
(1-20) <b>G</b>		
<i>Not energy efficient - higher running costs</i>		
<b>England &amp; Wales</b>	EU Directive 2002/91/EC	



These particulars do not constitute an offer or a contract neither do they form part of an offer or contract. The vendor does not make or give Attain Properties Limited nor any person employed has any authority to make or give any representation or warranty, written or oral, in relation to this property. Whilst we endeavour to make our sales details accurate and reliable, if there is any point which is of particular importance to you, please contact the office and we will be pleased to check the information for you, particularly if contemplating travelling some distance to view the property. None of the services or appliances to the property have been tested and any prospective purchasers should satisfy themselves as to their adequacy prior to committing themselves to purchase.