



2 Bed Apartment

Apartment 1 Whittle House 1 Scutari Close, Derby, DE1 2BA

£1,000 Per Calendar Month

Approx 600.00 sq ft



attain-properties.co.uk

- Parking Space Included
- Brand New Home - Ready to move in from 11/03/2025
- Kitchen Appliances Included
- Ground Floor Apartment
- Deposit Replacement Option Available

Welcome to Whittle House, a stunning new build apartment located at 1 Scutari Close. This delightful ground floor residence offers a modern living experience, perfect for those seeking comfort and convenience. Spanning an impressive 600 square feet, the apartment features two well-proportioned bedrooms and two stylish bathrooms, making it an ideal choice for couples, small families, or professionals.

As you enter, you will be greeted by a light and airy reception room that creates a welcoming atmosphere. The open-plan design allows for seamless living, making it perfect for entertaining guests or enjoying quiet evenings at home. The contemporary kitchen comes complete with brand new appliances, ensuring that you have everything you need to prepare delicious meals.

One of the standout features of this property is the included parking space, a rare find in many urban settings. This added convenience allows you to come and go with ease, making your daily commute or weekend outings hassle-free.

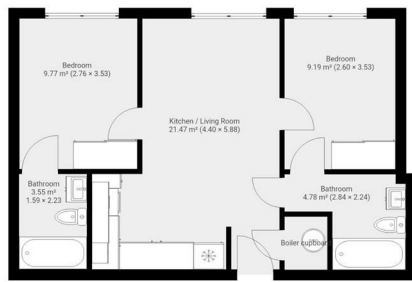
Built in 2025, this apartment is part of a modern development that prioritises quality and style. The fresh, new environment provides a blank canvas for you to personalise and make your own.

Whittle House is not just a place to live; it is a lifestyle choice that combines modern living with practicality. With its prime location and thoughtful design, this apartment is sure to impress. Do not miss the opportunity to make this brand new home your own.

These particulars do not constitute an offer or a contract neither do they form part of an offer or contract. The vendor does not make or give Attain Properties Limited nor any person employed has any authority to make or give any representation or warranty, written or oral, in relation to this property. Whilst we endeavour to make our sales details accurate and reliable, if there is any point which is of particular importance to you, please contact the office and we will be pleased to check the information for you, particularly if contemplating travelling some distance to view the property. None of the services or appliances to the property have been tested and any prospective purchasers should satisfy themselves as to their adequacy prior to committing themselves to purchase.



These particulars do not constitute an offer or a contract neither do they form part of an offer or contract. The vendor does not make or give Attain Properties Limited nor any person employed has any authority to make or give any representation or warranty, written or oral, in relation to this property. Whilst we endeavour to make our sales details accurate and reliable, if there is any point which is of particular importance to you, please contact the office and we will be pleased to check the information for you, particularly if contemplating travelling some distance to view the property. None of the services or appliances to the property have been tested and any prospective purchasers should satisfy themselves as to their adequacy prior to committing themselves to purchase.



THIS FLOOR PLAN IS PROVIDED WITHOUT WARRANTY OF ANY KIND. SENDRA DISCLAIMS ANY WARRANTY INCLUDING, WITHOUT LIMITATION, SATISFACTORY QUALITY OR ACCURACY OF DIMENSIONS.

Energy Efficiency Rating

	Current	Potential
<i>Very energy efficient - lower running costs</i>		
(92 plus) A		
(81-91) B	81	81
(69-80) C		
(55-68) D		
(39-54) E		
(21-38) F		
(1-20) G		
<i>Not energy efficient - higher running costs</i>		
England & Wales	EU Directive 2002/91/EC	

These particulars do not constitute an offer or a contract neither do they form part of an offer or contract. The vendor does not make or give Attain Properties Limited nor any person employed has any authority to make or give any representation or warranty, written or oral, in relation to this property. Whilst we endeavour to make our sales details accurate and reliable, if there is any point which is of particular importance to you, please contact the office and we will be pleased to check the information for you, particularly if contemplating travelling some distance to view the property. None of the services or appliances to the property have been tested and any prospective purchasers should satisfy themselves as to their adequacy prior to committing themselves to purchase.