



2 Bed House - Semi-Detached
21 Bonsall Avenue, Littleover, Derby, DE23 6JX
£900 Per Calendar Month
Approx 861.00 sq ft

 2
  1
  3
  D

- Littleover Community School Catchment
- Front & Rear Garden
- Driveway / Off-Road Parking
- Highly Desirable Littleover Area
- EPC D / Council Tax B
- Close to Royal Derby Hospital / A38
- 360 Virtual Tour on Listing
- Available On Or Shortly After 23/05/2025

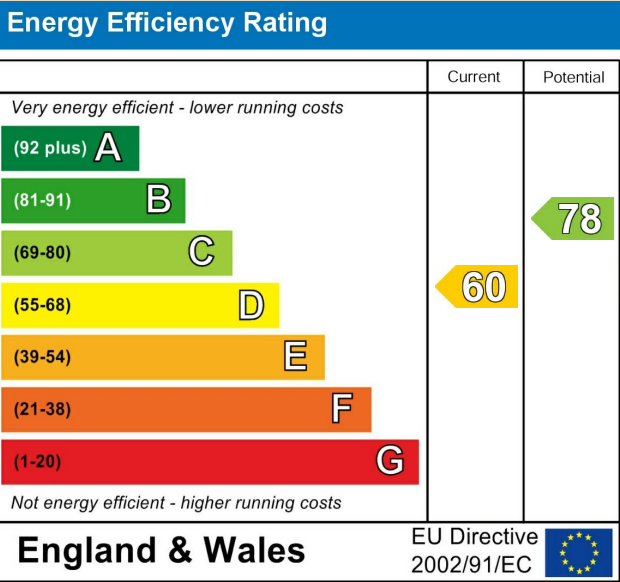
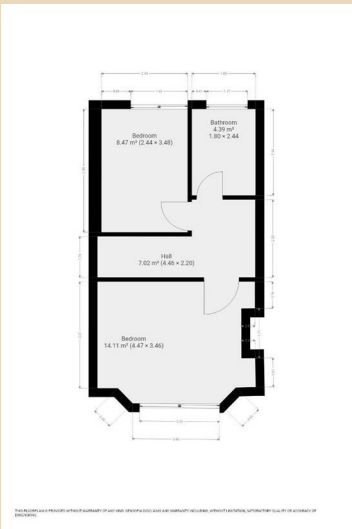
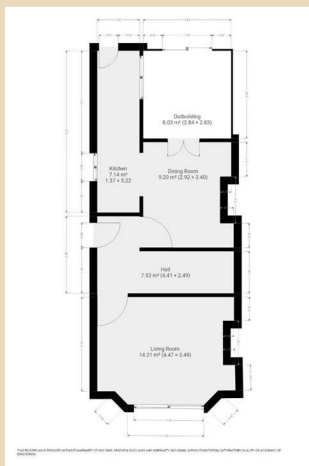
Looking for somewhere to move into this summer
Remember to check-out the 360 Virtual Tour on the listing!

The landlord can provide white goods at an additional cost of £50PCM
Please note that the garage is not suitable for use and not included with the let.



These particulars do not constitute an offer or a contract neither do they form part of an offer or contract. The vendor does not make or give Attain Properties Limited nor any person employed has any authority to make or give any representation or warranty, written or oral, in relation to this property. Whilst we endeavour to make our sales details accurate and reliable, if there is any point which is of particular importance to you, please contact the office and we will be pleased to check the information for you, particularly if contemplating travelling some distance to view the property.

None of the services or appliances to the property have been tested and any prospective purchasers should satisfy themselves as to their adequacy prior to committing themselves to purchase.



These particulars do not constitute an offer or a contract neither do they form part of an offer or contract. The vendor does not make or give Attain Properties Limited nor any person employed has any authority to make or give any representation or warranty, written or oral, in relation to this property. Whilst we endeavour to make our sales details accurate and reliable, if there is any point which is of particular importance to you, please contact the office and we will be pleased to check the information for you, particularly if contemplating travelling some distance to view the property.

None of the services or appliances to the property have been tested and any prospective purchasers should satisfy themselves as to their adequacy prior to committing themselves to purchase.