



2 Bed Apartment

Apartment 23 Suede House, John Street, Derby, Derbyshire, DE1 2EX

£1,100 Per Month

Approx 646.00 sq ft

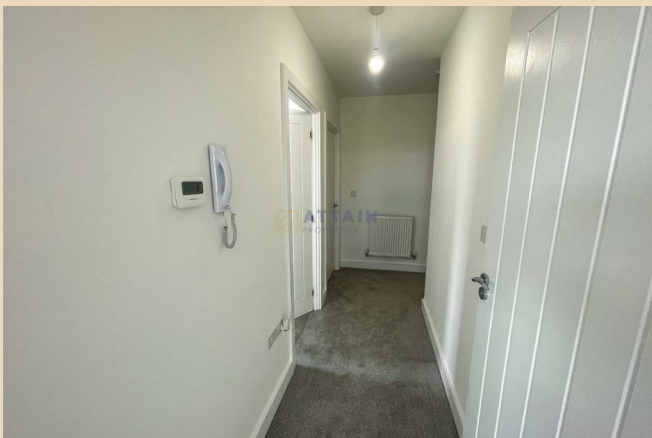
 2  2  1  B

- Gas Central Heating
- Two Double Bedrooms
- Main Bathroom & En-suite
- High EPC (B)
- Close to Derby Train Station
- Juliet Balcony
- Parking Space Included
- Council Tax TBC (New Build)
- Deposit Replacement Option Available
- Close To City Centre

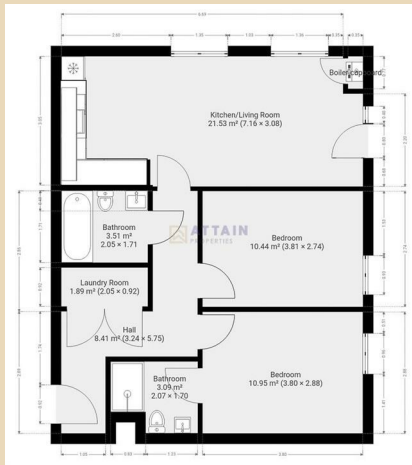
Want a parking space with your apartment? This property is located on the top floor!
Don't miss out on this fantastic opportunity to rent one of Suede Houses' most desirable apartments.
Deposit Replacement Options Available.


Gorgeous kitchen with high specification appliances, gas central heating, high energy efficiency rating and a Juliet balcony!

In-person viewings encouraged.



These particulars do not constitute an offer or a contract neither do they form part of an offer or contract. The vendor does not make or give Attain Properties Limited nor any person employed has any authority to make or give any representation or warranty, written or oral, in relation to this property. Whilst we endeavour to make our sales details accurate and reliable, if there is any point which is of particular importance to you, please contact the office and we will be pleased to check the information for you, particularly if contemplating travelling some distance to view the property. None of the services or appliances to the property have been tested and any prospective purchasers should satisfy themselves as to their adequacy prior to committing themselves to purchase.



Energy Efficiency Rating		
	Current	Potential
<i>Very energy efficient - lower running costs</i>		
(92 plus) A		
(81-91) B	83	83
(69-80) C		
(55-68) D		
(39-54) E		
(21-38) F		
(1-20) G		
<i>Not energy efficient - higher running costs</i>		
England & Wales	EU Directive 2002/91/EC 	



These particulars do not constitute an offer or a contract neither do they form part of an offer or contract. The vendor does not make or give Attain Properties Limited nor any person employed has any authority to make or give any representation or warranty, written or oral, in relation to this property. Whilst we endeavour to make our sales details accurate and reliable, if there is any point which is of particular importance to you, please contact the office and we will be pleased to check the information for you, particularly if contemplating travelling some distance to view the property. None of the services or appliances to the property have been tested and any prospective purchasers should satisfy themselves as to their adequacy prior to committing themselves to purchase.